

# APP-TRONICS

WWW.APP-TRONICS.COM

## SMARTVISION



Please read the installation guide for the SmartVision before installing.

If not installed as shown the system will not operate at maximum performance and may damage the internal PCB board.

2014 SEMA



GLOBAL  
MEDIA AWARDS  
WINNER

Operation Manual

## TABLE OF CONTENTS

Table of Contents	1
SmartVision Optional Accessories	2
Parts overview	3
Connection Points Overview	6
Installation Guide	8
Button Functions	14
Menu Settings	15
Video and Camera Mode	17
Video Playback	18
Computer Playback	19

## SMARTVISION OPTIONAL ACCESSORIES

Visit [www.App-Tronics.com](http://www.App-Tronics.com) to purchase any of our optional accessories.

Our parking sensors can be used as a stand-alone unit or can be integrated with the SmartVision Mirror.



Please use the following illustrations for reference during the installation procedure. App-Tronics recommends the use of our Authorized Dealers for installation of the SmartVision. Please contact us to receive a list of available dealers near you. The extended warranty can only be given when installed by an Authorized Dealer.



Fig. 1A  
SmartVision Mirror



Auxiliary audio out for direct feed into vehicles audio system (3.5mm).

Fig. 1B  
Auxiliary Connection



Fig. 1C  
Auxiliary Connection

SmartVision comes with an auxiliary port to allow for direct tie into vehicles audio system. The vehicle must have its own auxiliary port, and the use of a male to male 3.5mm audio cord will be needed (Not included with the purchase of your Smart-Vision). **If you experience any interference please use a 3.5mm grounding adaptor for maximum quality.**

Fig. 1D, Our universal windshield mount fits most vehicles without any special installation. In rare cases this mount will not work please contact your authorized dealer or App-Tronics for support, we offer a full line of OEM specialty mounts.



Fig. 1D  
Universal Windshield  
Mount

Fig. 2A , Is the main wiring harness for the SmartVisionMirror. This harness will connect to the mirror and lead to the power source.



Fig. 2A  
SmartVision  
Wiring Harness

Fig. 2B, Video and power line feed for backup camera. This harness will connect to the main harness and lead to the reversing camera.



Fig. 2B  
Camera Wiring Harness



Fig. 2C  
Backup Camera



Fig. 2C, Reversing camera

App-Tronics offers several optional cameras please contact your authorized dealer or App-Tronics if you want a specialty camera.

Fig. 2D, App-Tronics parking sensors with audible alerts. This is an optional add on.



Fig. 2D  
Standard Parking Sensors



Fig. 2e, App-Tronics premium parking sensors with audible and visual alerts. These parking sensors are designed for metal bumpers. This is an optional add on.



Fig. 2E  
Premium Parking Sensors

## CONNECTION POINTS OVERVIEW



SmartVision Wire Harness



Green Wire, Reversing signal wire, connected to reverse relay, BCM module.

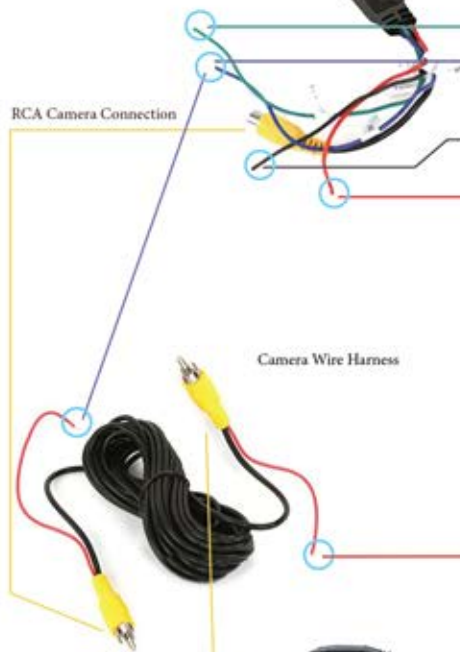
Connect both Blue wire and front Red pigtail wire to the same 12 volt accessory line.

Black wire, connected to a secure grounding point.

Red Wire, constant 12 volt line.

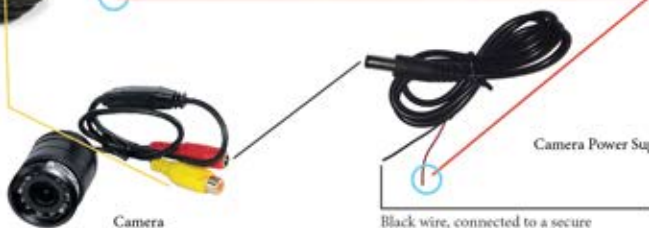
RCA Camera Connection

Camera Wire Harness



Rear camera power wire, connected to 12 Volt Accessory Pigtail Wire.

Camera Power Supply



Black wire, connected to a secure grounding point.



Fig. 4A

Install mount on back of SmartVision with the provided screws.

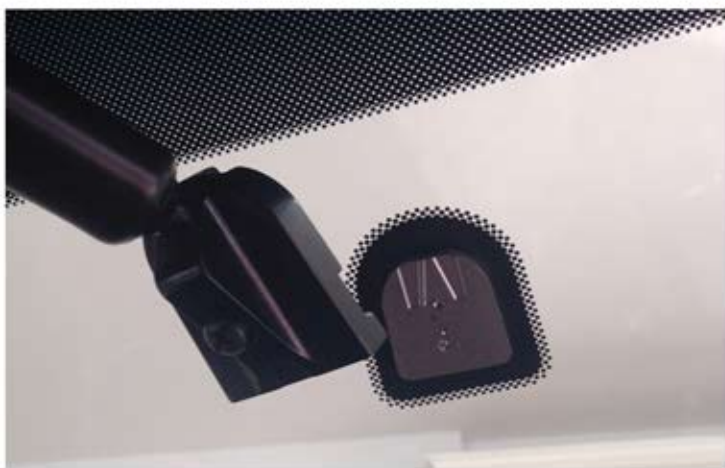


Fig. 4B

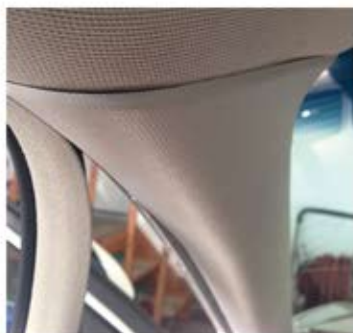
Attach the mount according to what mount you are using. If you are using pre-existing anchor and OEM mount, use same process but in reverse of the factory mirror and mount you removed. If using universal mount and new anchor, you need to attach anchor with windshield mount repair kit which can be purchased at any auto parts store (not provided with purchase of SmartVision).

The mount provided fits nearly all vehicles on the road. Please contact App-Tronics for a complete applicational mounting chart for all other vehicles.





Tuck wire from SmartVision into headliner. It only has to go in just a little to stay in place.



Route to which ever pillar A or B will get you to your power source. In this case it was A pillar, the Driver side.



Remove weather stripping and run wire harness behind it. As you come down the pillar, tuck weather stripping back into place pressing firmly. You may need to use a plastic wedge tool to force back behind dash.



Locate your power source to be used for installation. Each SmartVision needs both constant and accessory power as well as ground. Each main wire harness has these wires marked clearly. Guide the main harness down the A or B pillar to this location. You can gently remove the weather stripping and tuck into place then use your fingers to push harness inside headliner to the mirrors location.

A. Using a volt meter locate you constant power source, tap the **Red** wire (12 Volt Positive) into this source. Be sure that this constant power source does not "go to sleep" after 15 minutes.

B. Use the same process to find an accessory power source (Power only on while car is running or in accessory keyed position). The **Blue** wire will need to be tapped into this source. You must also tie in the **Red** pigtail wire from the rear camera harness to the same accessory power source. Splice the wires together. This will allow the rear camera to stay on while car is running to record.

C. The **Black** wire is your ground, locate a strong solid grounding source. Attach the **Black** wire to this location.

5. The **Green** wire at the end of main harness needs to be tied into the vehicles reverse relay in the front of the vehicle, usually located in the cars BCM module, if the BCM module cannot be located you can extend the wire all the way to the reverse bulb in the back of vehicle. Please see page 12 for wiring diagram. This will trigger the rear camera to display when car is put into reverse.



Fuse Panel



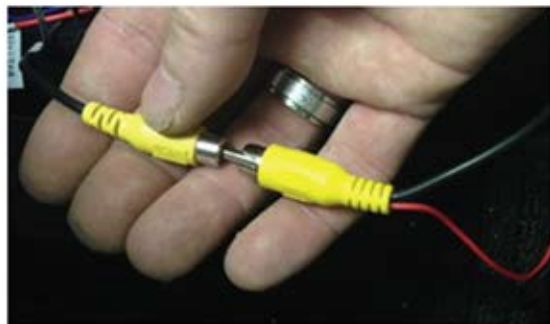
Fuse Tap

In some cases you are unable to find a power harness, locate your interior fuse panel. You can purchase fuse taps from any auto parts store. Connect the constant power wire (**red cable batt+**) to a constant power fuse and the **blue wire** to a accessory power fuse. Please refer to vehicles owner's manual for a listing of fuses.

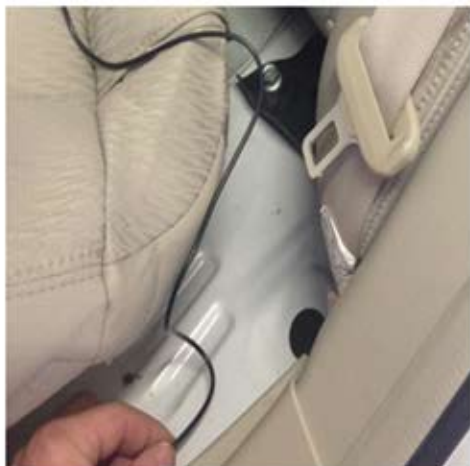


Next find your ground source, (**black wire**) you may have to extend your black ground wire to find suitable location.

Next attach your rear camera feed (**yellow RCA connectors**). From the wire harness and the rear camera wiring harness. If you have not been able to locate the reversing relay on vehicle you can tie in the Red wire from camera harness to the Green reversing line on main harness.  
(continued on next page)



Next run the rear camera wire feed to back of vehicle along the floor board trim then under rear seat. Mount your camera in desired location. To do this properly some panels may need to be removed in trunk or lift gate.



Rear camera installation: (App-Tronics recommends installation by a professional service. Go to [app-tronics.com](http://app-tronics.com) and search dealer locator.) Call 1-888-587-4111 for assistance.

1. Guide the rear camera harness from the end of the main harness to the back of the vehicle removing trim pieces as needed. Note: Route the correct end to the back of the vehicle. You only need to tie the **Red** power line for rear camera to the other **Red** pigtail on the rear camera harness. The camera will be powered from the blue accessory line on main harness.

3. You may need to also attach the black ground wire for the rear camera yet may not be needed. Call 1-888-587-4111 for assistance

4. Find a suitable location to attach the rear camera to the vehicle. Depending on vehicle, cameras may vary. Use the provided double sided tape and screws provided for installation. (Some trim pieces will need to be removed and then reinstalled for proper installation).

If you cannot connect the green camera wire to the vehicles BCM module please use the wiring diagram below for proper installation. A length of wire (24 gauge) approximately 25 feet will need to be purchased, it is not included with this kit.






If you have any questions email App-Tronics at [info@app-tronics.com](mailto:info@app-tronics.com) or call 1-888-587-4111 for further assistance.

If you have purchased the optional Parking Sensors along with your SmartVision. You would have received the installation manual with the sensors. Below is a quick layout of the additional wiring needed to help you start the Parking Sensors installation process.


(Refer to manual included with the parking sensors packaging).


## BUTTON FUNCTIONS





 First button from the left, Power Button. Long Press this button to turn the system off.

Tap button to turn display on and off. When display is off the mirror is still powered on and recording.

 Second button from the left, press this button to stop and start recording. When in the settings menu this button functions as the select button.

 Third button from the left, tap this button to enter video, picture or playback mode.  
Long press this button to enter into the settings menu.

 Fourth button from the left, tap this button to toggle on and off the microphone feature.  
Long press this button to toggle on and off the motion recording feature.  
When in the settings menu this button functions as the up button.

 Fifth button from the left, this button is used for the Bluetooth feature.  
Long press this button to turn Bluetooth on and off.  
When in video mode tap this button to switch between front and rear cameras.  
Tap this button to accept incoming phone calls tap again to end phone call.  
When in the settings menu the button functions as the down button.

## MENU SETTINGS

If the display is off, press any of the four buttons to turn display on.

To enter the display menu you must first stop the current recording by pressing the first button from left:



Long press the settings button for three seconds to enter the settings menu.



Video Quality	- 1080P or 780P
Photo Quality	- 1 min, 2 min, 5 min or 8 min selection
Video Duration	- 1 min, 3 min or 5 min duration
Move Detect	- Check box to toggle on and off
Time Water Mask	- Check box to toggle on and off
Language	- Choose from the 12 provided
Screen Switch	- 10 seconds, 1min, 5 min or off
Microphone	- Check box to toggle on and off

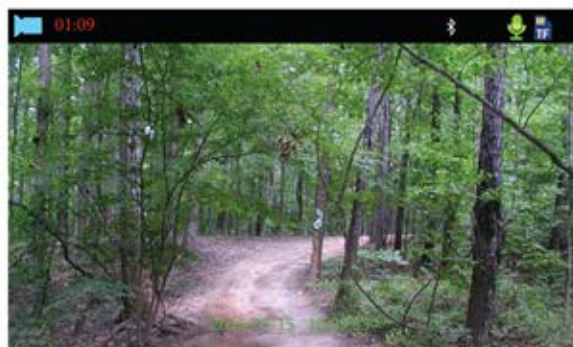




- |                     |   |                                |
|---------------------|---|--------------------------------|
| Key Sound           | - | Toggle on and off              |
| Park Monitor        | - | Option Parking Sensors Feature |
| GSensor Sensitivity | - | Select low, medium or high     |
| GPS Sync Time       | - | Sync th GPS time stamp         |
| GPS Time Zone       | - | Select you current time zone   |
| Bluetooth           | - | Toggle on and off              |
| Power on Record     | - | Automatic recording on or off  |



- |               |   |                                |
|---------------|---|--------------------------------|
| White balance | - | Recomended Auto                |
| Exposure      | - | Recomended 0                   |
| Date          | - | Set date and time              |
| Format        | - | Select to format micro SD card |



Camera view and record time.



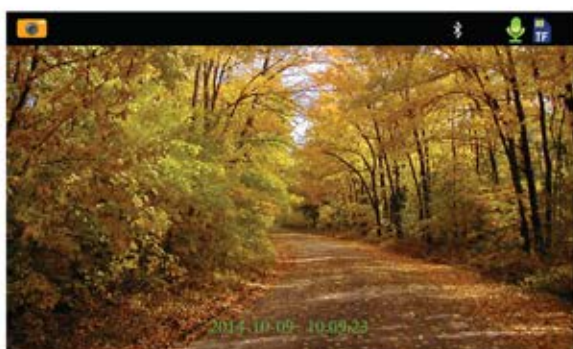
Audio recording on or off.



Memory card.



Bluetooth



Camera mode.



Audio recording on or off.



Memory card.



Bluetooth

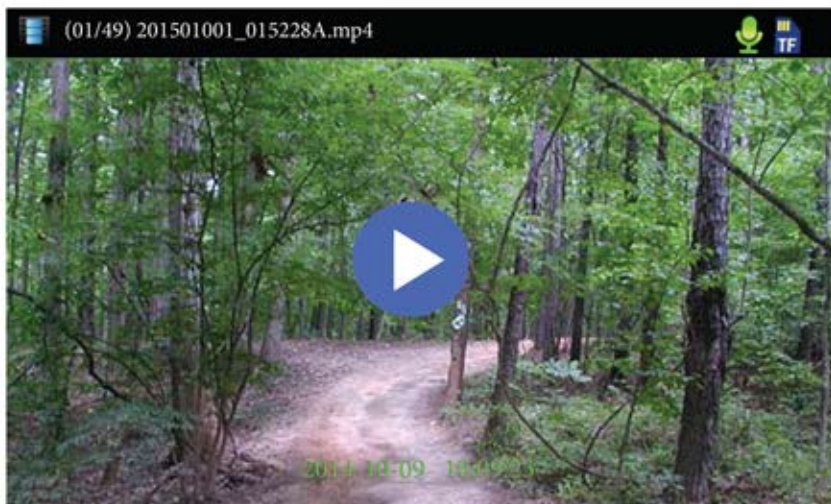
To enter camera mode you must first stop current recording by pressing the selection button. The selection button is the second from the left.

When in camera mode a camera icon will appear in the top left corner.

To take pictures short press the selection button.

To enter playback mode you must first stop current recording by pressing the selection button. The selection button is the second from the left.

Short press the settings button twice to enter the playback mode. The settings button is the fourth from the left.



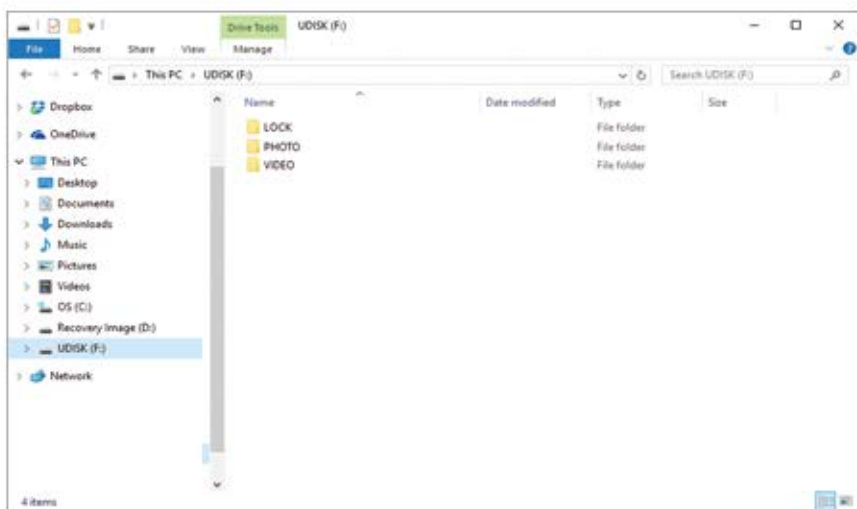
When in playback mode you can search videos and photos by using the first two buttons. Short press the first button to scroll back through media, press the third or fourth button to scroll forward through media.

To view selected video, short press the selection button. The selection button is second from the left. Video playback will begin.

To pause video playback short press selection button.

To exit current playing video short press the settings button.

Return to record mode by pressing the settings button.




To view you're saved videos and photos, remove the memory card from your mirror and insert the memory card into your computer.

Folder Named LOCK: Contains all locked videos, Locked videos can be deleted from your computer only.

Folder Named PHOTO: Contains all saved photos captured from your mirror.

Folder Named VIDEO: Contains all videos recorded from the front viewing camera or from the reversing camera.



App-Tronics motto “Details on their own can mean little, together they mean everything” is how this company was started. Perfecting every aspect of the products’ use and performance has always been our goal. When you see the SmartNav 5 for the first time, you will appreciate the dedication the staff at App-Tronics has put into this product. This is what makes the SmartNav 5 the benchmark in applicational rear view mirrors that will never be challenged.